

ISI BUILDING PRODUCTS®

INSTALLATION GUIDE

FOR WRAPTOR® BUILDING WRAP

Note: Building wrap should be installed after the wall framing/sheathing is complete and before the windows and doors are installed.

Step 1: Beginning at an outside corner, unroll wrap tightly against the sheathing.

- Application should extend around the starting corner by at least 6 inches.
- Bottom edge of wrap should extend over the foundation or sill plate by 2 inches.
- Keep wrap vertical and plumb while unrolling.
- Pull material tight and flat to eliminate wrinkles.
- Rough openings for windows and doors will be covered with wrap during this step.
- Further preparation for rough openings will be addressed in Step 4.

Step 2: Fasten using plastic cap fasteners with sufficient length to penetrate structural framing at least 1/2 inch.

- When installing over metal framing, use capped screws with washers.
- Fasteners should be spaced at a maximum of 32 inches vertically.
- For 16-inch OC framing, install fasteners along every other stud.

- For 24-inch OC framing, install fasteners along every stud.

Step 3: Overlap subsequent courses and tape all seams.

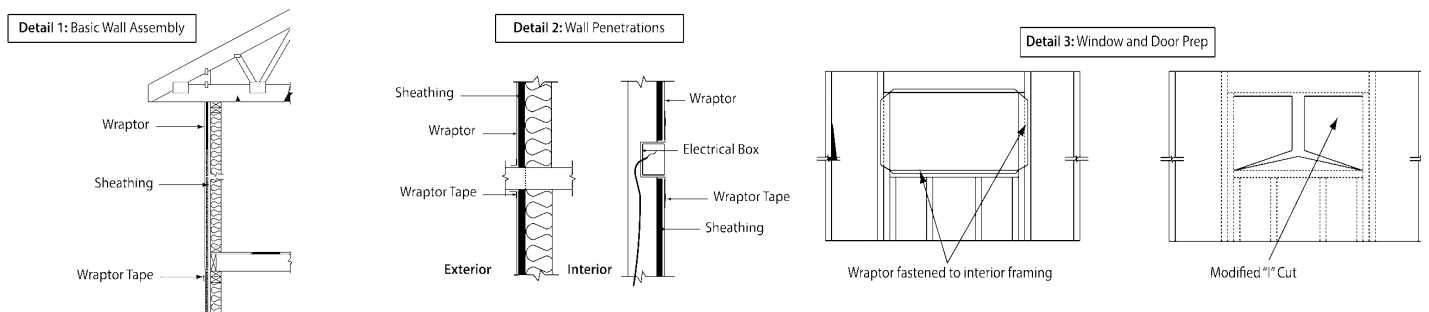
- Material higher on walls should overlap lower material in a shingle-like fashion.
- Horizontal overlaps should be a minimum of 6 inches.
- Vertical overlaps should be a minimum of 4 inches.
- Use Wraptor Building Wrap Tape to seal all seams and penetrations.

Step 4: Prep for window and door installation.

- Cut wrap over window and door openings using a modified "I" pattern (Detail 2).
- Fold excess material on the sides and bottom of the opening into the rough opening and fasten to the interior structural framing.
- Install window and door flashing in accordance with manufacturers' guidelines.

General Precautions (SDS available at www.isibp.com)

- Wraptor is slippery when wet.
- ISI recommends kick jacks or scaffolding be used for exterior work above first floor.



DISCLAIMER: REASONABLE CARE HAS BEEN TAKEN IN THE PREPARATION OF THIS INFORMATION, BUT THE MANUFACTURER MAKES NO WARRANTY OF MERCHANTABILITY OR ANY OTHER WARRANTY, EXPRESSED OR IMPLIED, WITH RESPECT TO THIS INFORMATION. THE MANUFACTURER MAKES NO REPRESENTATIONS AND ASSUMES NO LIABILITY FOR ANY DIRECT, INCIDENTAL OR CONSEQUENTIAL DAMAGES RESULTING FROM USE.



AN AFFILIATE OF MEYER ENTERPRISES, LLC
 401 TRUCK HAVEN ROAD, EAST PEORIA, IL 61611
 PHONE: 309.698.0062 / FAX: 309.698.0065