

ISI BUILDING PRODUCTS®

INSTALLATION GUIDE

FOR INSUL-TARP® UNDER-SLAB INSULATION

Note: Insul-Tarp ships in roll form.

Step 1: Unroll

- White side should be facing up.

Step 2: Layout

- Insul-Tarp courses should be square with slab edge.
- Overlap Insul-Tarp at seams a minimum of 4 inches.
- Ensure insulation is overlapping insulation.
- For a continuous vapor barrier, seams should be taped.
- Tape seams using 4-inch White Poly Tape.

Step 3: Pipe Penetrations/Obstructions

- Line Insul-Tarp up with obstruction.
- Cut "X" in tarp with scissors or sharp utility knife.
- Slide over obstruction and continue.

Step 4: If air pockets occur:

- Cut a slit in top layer of Insul-Tarp to release trapped air.
- Place a piece of 4-inch tape over slit and continue pouring.

Step 5: Protection

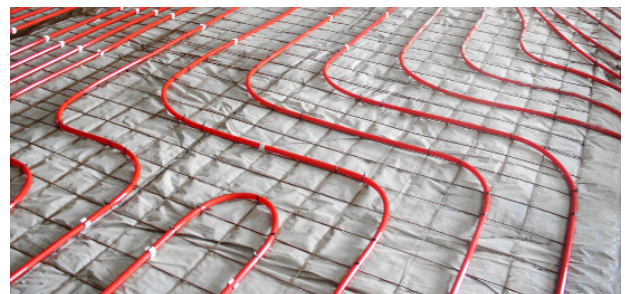
- Place standard reinforcing bar supports on Insul-Tarp.
- Avoid driving stakes through Insul-Tarp. If this cannot be avoided, each individual hole/tear must be repaired in order to maintain vapor barrier integrity.

Pro Tips

- Contractor-grade scissors work best for cutting Insul-Tarp.
- Tape all cut edges with 4-inch White Poly Tape.
- Install cut/taped edges under the factory edges when possible.
- When ordering square footage, add 10% for cuts, overlap and seamed edges.
- 2-inch Rigid Foam Board works well for insulating slab edge.
- If using wire mesh for pex layout, use Quips instead of zip ties to fasten tubing.



Quip Radiant Tubing Clips



DISCLAIMER: REASONABLE CARE HAS BEEN TAKEN IN THE PREPARATION OF THIS INFORMATION, BUT THE MANUFACTURER MAKES NO WARRANTY OF MERCHANTABILITY OR ANY OTHER WARRANTY, EXPRESSED OR IMPLIED, WITH RESPECT TO THIS INFORMATION. THE MANUFACTURER MAKES NO REPRESENTATIONS AND ASSUMES NO LIABILITY FOR ANY DIRECT, INCIDENTAL OR CONSEQUENTIAL DAMAGES RESULTING FROM USE.



AN AFFILIATE OF MEYER ENTERPRISES, LLC
401 TRUCK HAVEN ROAD, EAST PEORIA, IL 61611
PHONE: 309.698.0062 / FAX: 309.698.0065